

PRODUCT FACT SHEET

REVOLUTIONARY AND  
INTELLIGENT NETWORKING:



# LFS.tms

transportation management solutions



- Full integration of internal and external logistics
- No additional interfaces required
- Cost-efficient tour optimization
- Transparent cost and time overview
- Dynamic tour planning with integrated route planning

Knowing where your vehicles are at any time. Simply planning the optimal route for single tours online and tracing the delivery status. The tour planning from Ehrhardt + Partner combines internal and external logistics into a powerful unit.

With the product line LFS.tms (Transportation Management Solutions), the warehouse management system LFS becomes a global TMS solution. An intelligent connection with the Warehouse Management Solutions LFS.wms<sup>2</sup> allows managing internal logistics and transportation with only one system – without an interface connection to third-party solutions.

This global tour management solution offers dynamic tour planning, allowing the customers to react to changes in their supply chain at any time. All data is transferred in real-time.

LFS.tms offers a solution that combines warehouse and transport information in one unit. The module always considers the optimum route and the current traffic situation. All processes are controlled by LFS and intelligently coordinated.

Engineered  
by EPG



## Integrated E+P tour planning system: Focused on the goal

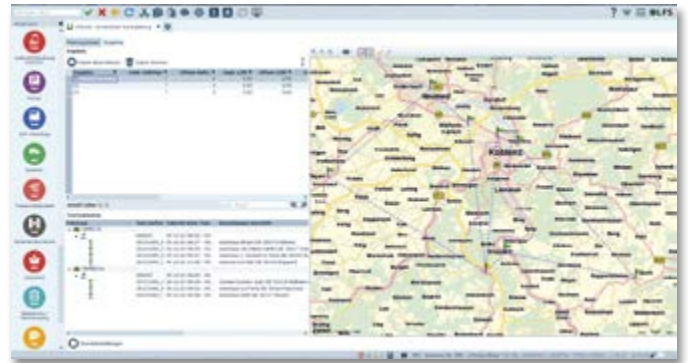
Assigning orders to vehicles, observing the maximum load space or planning the optimal route for every truck – the tour planning module for logistics included in the new product line LFS.tms always calculates the individually suitable solution and simplifies all aspects of dispatch planning.

The permanent communication with the warehouse management solutions LFS.wms<sup>2</sup> also guarantees on-time delivery, short transport routes for the items on their way to the customer and the fully automated assignment of orders and tours.

## Dynamic tour planning in LFS.V8

In its full scope, tour management provides the following services:

- Fully automatic assignment of orders to routes
- Solution proposal function based on customer, road, order, and fleet data, as well as restrictions such as traffic jams
- Last-minute orders are taken into account
- Flexibly adaptive to current situations via



## LFS.delivery – the truck driver app by E+P



The truck driver app supports truck drivers when planning their order processing, right up to the delivery of goods at the customer location. All steps are seamlessly and transparently integrated into LFS.

All that is possible using a smartphone, based on the “bring your own device” principle.

## THE ADVANTAGES AT A GLANCE:

- Full integration into LFS: interfaces to third-party systems are not required
- Operation in the common LFS user interface
- High transparency and efficiency
- Time savings thanks to lean processes
- Cost savings thanks to optimum route calculation
- Paper documents and vouchers are not needed

Ehrhardt + Partner GmbH & Co. KG  
 Alte Römerstraße 3 • D-56154 Boppard-Buchholz • Germany  
 Phone (+49) 67 42-87 27 0 • Fax (+49) 67 42-87 27 50  
 Email [info@epg.com](mailto:info@epg.com)  
 Internet [www.epg.com](http://www.epg.com)